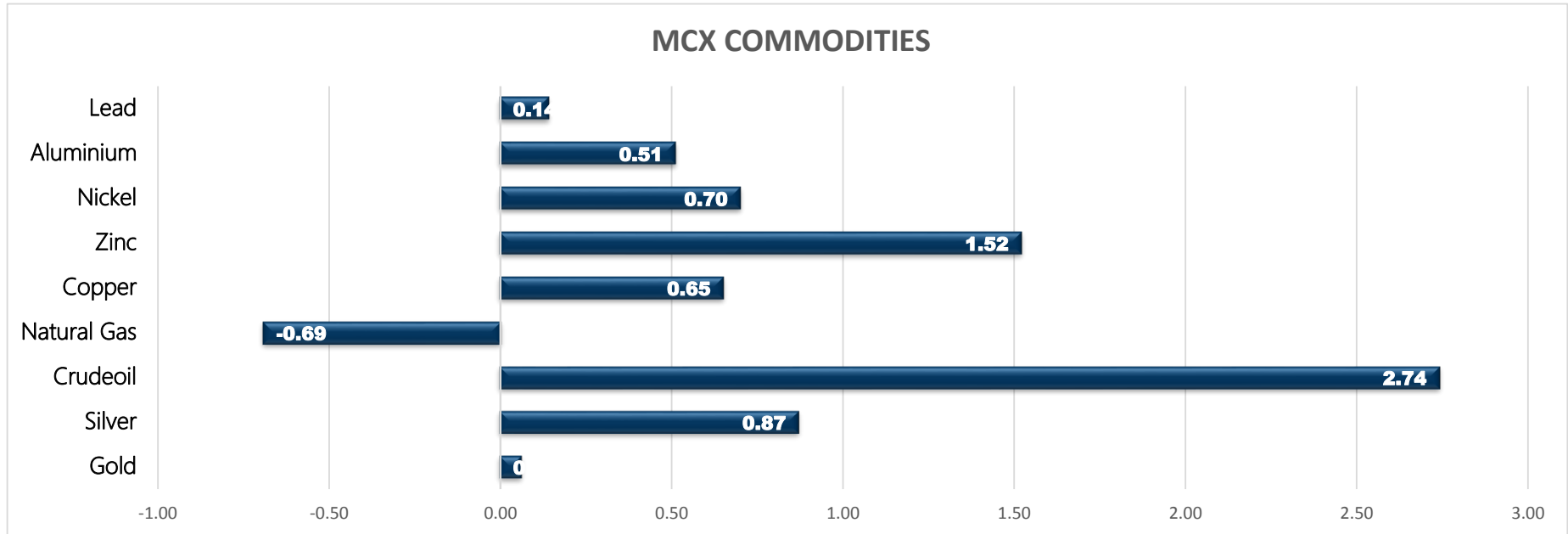


Commodity	Close	% Change
Gold	47612.00	0.06
Silver	63474.00	0.87
Crudeoil	5021.00	2.74
Natural Gas	288.90	-0.69
Copper	716.60	0.65
Zinc	247.10	1.52
Nickel	1432.70	0.70
Aluminium	207.35	0.51
Lead	179.15	0.14

Commodity	Ltp*	% Change
Gold\$	1795.94	-0.34
Silver\$	23.71	-0.53
Crudeoil\$	67.54	2.89
Natural Gas\$	3.90	-1.24
Lme Copper	9365.00	0.08
Lme Zinc	3002.50	-0.22
Lme Nickel	19085.00	0.16
Lme Lead	2285.00	-0.31
Lme Aluminium	2625.00	0.81

Economical Data	
EUR	German ifo Business Climate
USD	Core Durable Goods Orders m/m
USD	Durable Goods Orders m/m
EUR	Belgian NBB Business Climate
USD	Crude Oil Inventories



MCX MARKET SYNOPSIS

Contract	Open	High	Low	Close	Rs Chg	% Chg	Volume	OI	OI % Chg
Copper Sep	711.90	720.15	707.30	716.60	4.65	0.65	8167	3516	44.87
Copper Oct	713.00	721.00	710.30	718.85	5.25	0.74	106	87	38.10
Zinc Sep	244.00	247.70	243.50	247.10	3.70	1.52	2259	1117	44.50
Zinc Oct	244.00	245.50	244.00	244.85	5.10	2.13	5	3	0.00
Nickel Sep	1423.00	1445.80	1420.90	1432.70	10.00	0.70	3881	957	19.03
Nickel Oct	1440.10	1440.10	1440.10	1440.10	31.30	2.22	1	1	0.00
Aluminium Sep	206.15	208.35	205.80	207.35	1.05	0.51	2617	1589	31.21
Aluminium Oct	207.00	207.00	206.30	206.85	1.05	0.51	4	6	200.00
Lead Sep	178.70	179.50	178.55	179.15	0.25	0.14	765	720	58.94
Lead Oct	178.45	178.45	178.45	178.45	-1.60	-0.89	1	0	0.00

MCX PIVOT

Contract	Sup - 3	Sup - 2	Sup - 1	Pivot	Res - 1	Res - 2	Res - 3	OI Status
Copper Sep	696.50	701.90	709.30	714.70	722.10	727.50	734.90	Fresh Buying
Zinc Sep	240.30	241.90	244.50	246.10	248.70	250.30	252.90	Fresh Buying
Nickel Sep	1395.50	1408.20	1420.40	1433.10	1445.30	1458.00	1470.20	Fresh Buying
Aluminium Sep	203.60	204.70	206.10	207.20	208.60	209.70	211.10	Fresh Buying
Lead Sep	177.70	178.10	178.70	179.10	179.70	180.10	180.70	Fresh Buying

INTERNATIONAL MARKET SYNOPSIS

Commodity	Open	High	Low	Ltp*	Chg	% Chg	LME STOCKS	
LME Copper	9226.00	9430.00	9204.00	9357.50	7.50	0.08	LME Copper	-25
LME Zinc	2934.50	3020.00	2926.00	3009.00	-6.50	-0.22	LME Zinc	200
LME Nickel	18890.00	19250.00	18795.00	19055.00	30.00	0.16	LME Nickel	-1740
LME Lead	2280.50	2300.50	2270.00	2292.00	-7.00	-0.31	LME Lead	0
LME Aluminium	2592.00	2636.50	2592.00	2604.00	21.00	0.81	LME Aluminium	-5125

INTERNATIONAL PIVOT

Commodity	Sup - 3	Sup - 2	Sup - 1	Pivot	Res - 1	Res - 2	Res - 3
LME Copper	9005	9105	9231	9331	9457	9557	9683
LME Zinc	2856	2891	2950	2985	3044	3079	3138
LME Nickel	18362	18578	18817	19033	19272	19488	19727
LME Lead	2244	2257	2275	2288	2305	2318	2336
LME Aluminium	2541	2566	2585	2611	2630	2655	2674

COPPER

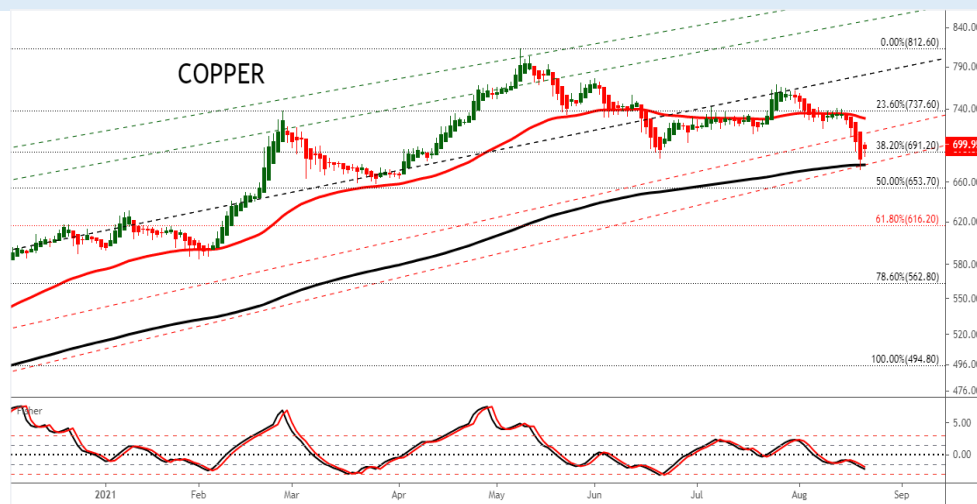
Copper trading range for the day is 701.9-727.5.

Copper prices rose as the premium of LME cash copper to the three-month contract was \$27.95 a tonne, indicating tightening nearby supplies.

US FDA's full approval of Pfizer and BioNTech's Covid-19 vaccine has eased the market's worries over economy recovery.

The global world refined copper market showed a 2,000 tonnes surplus in May, compared with a 86,000 tonnes deficit in April

Warehouse stock for Copper at LME was at 254775mt that is down by -25mt.



ZINC

Zinc trading range for the day is 241.9-250.3.

Zinc gained as the market's worries over economy recovery eased after US FDA's full approval of Pfizer and BioNTech's Covid-19 vaccine.

In spot market, inventories in two major markets in China added with processing charges rebounding slightly from low.

China's new home price growth slows as speculative curbs bite

Warehouse stock for Zinc at LME was at 239300mt that is up by 200mt.



NICKEL

Nickel trading range for the day is 1408.2-1458.

Nickel prices rose after a smelter in north China has suspended refined nickel production recently due to high production costs.

Chinese nickel producer Jien halts cathode output

China cbank offers more medium-term loan than expected to cushion economic slowdown

Warehouse stock for Nickel at LME was at 195558mt that is down by -1740mt.



ALUMINIUM

Aluminium trading range for the day is 204.7-209.7.

Aluminium prices remained supported as prices for alumina rose after a blaze at the Jamalco refinery in Jamaica led to fears of tighter supply.

Prices have been climbing amid strong demand for aluminium and disruption in China due to flooding.

One global aluminium producer seeks Q4 premiums of \$230/T

Warehouse stock for Aluminium at LME was at 1295125mt that is down by -5125mt.



COPPER PRICE MOVEMENT SINCE 2012

Year	JAN	FEB	MAR	APR	MAY	JUN	JUL	AUG	SEP	OCT	NOV	DEC	Growth
2012	417.15	417.70	431.65	443.90	420.25	429.40	422.55	424.30	441.05	419.70	436.30	443.75	37.75
	2.75	0.13	3.34	2.84	-5.33	2.18	-1.60	0.41	3.95	-4.84	3.96	1.71	9.30
2013	440.05	418.20	410.20	381.00	413.05	406.60	421.55	486.95	466.40	452.50	444.40	468.55	24.80
	-0.83	-4.97	-1.91	-7.12	8.41	-1.56	3.68	15.51	-4.22	-2.98	-1.79	5.43	5.59
2014	444.95	443.20	404.15	403.00	410.80	422.35	436.10	417.95	416.00	414.70	390.75	399.10	-69.45
	-5.04	-0.39	-8.81	-0.28	1.94	2.81	3.26	-4.16	-0.47	-0.31	-5.78	2.14	-14.82
2015	342.85	371.80	378.45	404.60	386.65	368.75	335.40	341.75	342.70	336.55	301.15	315.50	-83.60
	-14.09	8.44	1.79	6.91	-4.44	-4.63	-9.04	1.89	0.28	-1.79	-10.52	4.77	-20.95
2016	311.60	322.00	321.25	334.20	312.50	327.15	329.70	305.60	328.55	326.05	396.05	372.90	57.40
	-1.24	3.34	-0.23	4.03	-6.49	4.69	0.78	-7.31	7.51	-0.76	21.47	-5.85	18.19
2017	406.10	397.85	380.75	367.60	368.75	385.20	410.65	434.55	427.95	444.70	431.40	466.00	93.10
	8.90	-2.03	-4.30	-3.45	0.31	4.46	6.61	5.82	-1.52	3.91	-2.99	8.02	24.97
2018	450.90	446.00	436.80	449.40	457.05	446.15	430.15	414.00	452.95	435.70	433.10	407.75	-58.25
	-3.24	-1.09	-2.06	2.88	1.70	-2.38	-3.59	-3.75	9.41	-3.81	-0.60	-5.85	-12.50
2019	437.60	464.70	451.05	450.30	404.50	411.05	444.15	443.95	438.05	437.95	432.60	441.25	33.50
	7.32	6.19	-2.94	-0.17	-10.17	1.62	8.05	-0.05	-1.33	-0.02	-1.22	2.00	8.22
2020	427.25	421.80	376.80	403.45	416.20	464.70	500.75	527.30	525.20	526.40	582.30	594.70	153.45
	-3.17	-1.28	-10.67	7.07	3.16	11.65	7.76	5.30	-0.40	0.23	10.62	2.13	34.78
2021	596.40	702.95	667.95	754.10	768.85	721.50	751.70						157.00
	0.29	17.87	-4.98	12.90	1.96	-6.16	4.19						26.40
Average	-1.25	2.69	-2.53	1.37	-0.91	0.67	3.00	1.32	-0.10	0.35	2.05	2.44	Average

ZINC PRICE MOVEMENT SINCE 2012

Year	JAN	FEB	MAR	APR	MAY	JUN	JUL	AUG	SEP	OCT	NOV	DEC	Growth
2012	105.60	104.00	102.85	107.10	107.15	103.95	103.20	100.60	110.45	99.30	110.55	111.45	13.00
	7.26	-1.52	-1.11	4.13	0.05	-2.99	-0.72	-2.52	9.79	-10.10	11.33	0.81	13.20
2013	113.95	111.05	102.90	110.50	106.30	109.70	109.55	128.25	117.80	118.25	116.00	129.05	17.60
	2.24	-2.54	-7.34	7.39	-3.80	3.20	-0.14	17.07	-8.15	0.38	-1.90	11.25	15.79
2014	122.80	130.95	119.05	123.95	122.40	132.45	144.55	142.90	141.10	143.40	138.00	137.20	8.15
	-4.84	6.64	-9.09	4.12	-1.25	8.21	9.14	-1.14	-1.26	1.63	-3.77	-0.58	6.32
2015	130.40	127.70	129.90	149.75	141.05	127.10	122.85	121.30	108.90	109.10	103.20	106.15	-31.05
	-4.96	-2.07	1.72	15.28	-5.81	-9.89	-3.34	-1.26	-10.22	0.18	-5.41	2.86	-22.63
2016	109.25	122.45	118.40	129.20	129.30	142.15	148.80	155.90	158.10	163.90	185.55	173.80	67.65
	2.92	12.08	-3.31	9.12	0.08	9.94	4.68	4.77	1.41	3.67	13.21	-6.33	63.73
2017	193.10	187.70	180.40	169.45	165.95	178.25	179.50	200.95	210.20	215.05	205.95	207.60	33.80
	11.10	-2.80	-3.89	-6.07	-2.07	7.41	0.70	11.95	4.60	2.31	-4.23	0.80	19.45
2018	228.60	227.75	214.10	211.75	209.05	202.15	180.40	176.10	186.65	192.60	180.20	171.95	-35.65
	10.12	-0.37	-5.99	-1.10	-1.28	-3.30	-10.76	-2.38	5.99	3.19	-6.44	-4.58	-17.17
2019	195.15	197.80	221.35	223.20	203.00	200.50	192.25	185.30	185.55	187.85	185.05	179.00	7.05
	13.49	1.36	11.91	0.84	-9.05	-1.23	-4.11	-3.62	0.13	1.24	-1.49	-3.27	4.10
2020	174.45	154.85	145.50	150.60	159.00	163.50	184.00	196.05	190.80	201.80	220.20	214.40	35.40
	-2.54	-11.24	-6.04	3.51	5.58	2.83	12.54	6.55	-2.68	5.77	9.12	-2.63	11.81
2021	205.90	219.55	220.00	232.45	237.35	240.20	248.15						33.75
	-3.96	6.63	0.20	5.66	2.11	1.20	3.31						11.81
Average	0.89	1.16	-2.09	2.90	-2.20	0.65	2.74	2.59	-0.91	1.82	0.66	0.77	Average

NICKEL PRICE MOVEMENT SINCE 2012

Year	JAN	FEB	MAR	APR	MAY	JUN	JUL	AUG	SEP	OCT	NOV	DEC	Growth
2012	1050.20	974.30	927.40	936.60	923.80	935.40	892.80	884.40	978.50	878.50	931.70	935.70	-56.50
	5.85	-7.23	-4.81	0.99	-1.37	1.26	-4.55	-0.94	10.64	-10.22	6.06	0.43	-5.69
2013	979.10	895.70	921.50	824.00	826.70	823.90	829.20	928.20	869.80	892.20	836.90	864.50	-71.20
	4.64	-8.52	2.88	-10.58	0.33	-0.34	0.64	11.94	-6.29	2.58	-6.20	3.30	-7.61
2014	855.80	902.80	945.50	1097.40	1139.60	1124.30	1130.40	1140.30	1016.80	971.00	996.80	945.70	81.20
	-1.01	5.49	4.73	16.07	3.85	-1.34	0.54	0.88	-10.83	-4.50	2.66	-5.13	9.49
2015	922.90	874.90	779.70	881.00	808.00	744.50	698.50	668.10	661.90	660.90	583.50	582.00	-363.70
	-2.41	-5.20	-10.88	12.99	-8.29	-7.86	-6.18	-4.35	-0.93	-0.15	-11.71	-0.26	-38.46
2016	579.80	577.60	549.10	629.10	568.50	636.40	700.00	651.20	703.30	696.30	751.20	706.00	169.20
	-0.38	-0.38	-4.93	14.57	-9.63	11.94	9.99	-6.97	8.00	-1.00	7.88	-6.02	29.07
2017	670.30	725.30	640.10	608.90	568.50	600.60	655.70	743.70	692.60	766.30	727.50	783.40	77.40
	-5.06	8.21	-11.75	-4.87	-6.63	5.65	9.17	13.42	-6.87	10.64	-5.06	7.68	10.96
2018	863.10	898.30	840.50	926.40	1024.40	1022.30	944.00	909.30	905.00	860.00	774.80	741.60	-41.80
	10.17	4.08	-6.43	10.22	10.58	-0.20	-7.66	-3.68	-0.47	-4.97	-9.91	-4.28	-5.34
2019	884.90	931.10	904.00	854.60	876.50	906.00	1013.50	1245.40	1216.80	1200.40	1005.50	1029.20	287.60
	19.32	5.22	-2.91	-5.46	2.56	3.37	11.87	22.88	-2.30	-1.35	-16.24	2.36	38.78
2020	943.80	901.00	860.10	922.60	940.40	975.00	1041.90	1135.70	1065.30	1142.70	1206.70	1212.20	183.00
	-8.30	-4.53	-4.54	7.27	1.93	3.68	6.86	9.00	-6.20	7.27	5.60	0.46	17.78
2021	1286.90	1367.70	1184.10	1316.90	1328.40	1363.90	1484.10						151.70
	6.16	6.28	-13.42	11.22	0.87	2.67	8.81						12.51
Average	3.37	1.29	-2.98	4.20	-3.04	0.58	3.21	3.12	-1.76	0.18	-3.13	1.80	Average

ALUMINIUM PRICE MOVEMENT SINCE 2012

Year	JAN	FEB	MAR	APR	MAY	JUN	JUL	AUG	SEP	OCT	NOV	DEC	Growth
2012	112.15	112.65	108.35	108.05	111.35	105.65	103.95	103.00	110.95	101.85	113.35	111.75	4.80
	4.86	0.45	-3.82	-0.28	3.05	-5.12	-1.61	-0.91	7.72	-8.20	11.29	-1.41	4.49
2013	110.50	105.40	103.65	100.10	105.95	105.05	105.85	122.10	113.15	112.55	106.75	109.20	-2.55
	-1.12	-4.62	-1.66	-3.42	5.84	-0.85	0.76	15.35	-7.33	-0.53	-5.15	2.30	-2.28
2014	103.90	107.00	104.00	106.75	107.65	111.20	121.45	126.70	119.20	126.85	128.35	116.00	6.80
	-4.85	2.98	-2.80	2.64	0.84	3.30	9.22	4.32	-5.92	6.42	1.18	-9.62	6.23
2015	113.45	112.40	111.95	121.40	108.75	104.95	102.00	107.15	102.60	94.40	96.35	100.15	-15.85
	-2.20	-0.93	-0.40	8.44	-10.42	-3.49	-2.81	5.05	-4.25	-7.99	2.07	3.94	-13.66
2016	103.80	111.25	98.90	111.25	104.00	110.55	108.30	107.20	110.55	115.95	118.00	117.20	17.05
	3.64	7.18	-11.10	12.49	-6.52	6.30	-2.04	-1.02	3.12	4.88	1.77	-0.68	17.02
2017	123.40	126.45	126.20	123.90	123.90	123.55	121.95	135.30	137.90	138.60	131.00	143.30	26.10
	5.29	2.47	-0.20	-1.82	0.00	-0.28	-1.30	10.95	1.92	0.51	-5.48	9.39	22.27
2018	141.65	140.50	130.65	148.50	154.15	149.70	141.40	150.10	145.90	143.95	137.20	128.15	-15.15
	-1.15	-0.81	-7.01	13.66	3.80	-2.89	-5.54	6.15	-2.80	-1.34	-4.69	-6.60	-10.57
2019	136.00	151.10	149.15	146.20	145.35	143.20	140.35	138.70	134.60	132.00	133.55	137.25	9.10
	6.13	11.10	-1.29	-1.98	-0.58	-1.48	-1.99	-1.18	-2.96	-1.93	1.17	2.77	7.10
2020	139.10	136.70	134.45	131.00	131.70	137.95	140.90	146.15	143.80	152.95	167.05	160.95	23.70
	1.35	-1.73	-1.65	-2.57	0.53	4.75	2.14	3.73	-1.61	6.36	9.22	-3.65	17.27
2021	162.25	173.50	176.65	193.70	196.65	198.75	206.75						45.80
	0.81	6.93	1.82	9.65	1.52	1.07	4.03						28.46
Average	0.81	2.06	-1.72	3.02	-0.60	-0.82	1.25	3.31	-0.75	-0.12	0.53	0.61	Average

GENERAL DISCLAIMERS

KEDIA ADVISORY

This Report is prepared and distributed by Kedia Stocks & Commodities Research Pvt Ltd. for information purposes only. The recommendations, if any, made herein are expression of views and/or opinions and should not be deemed or construed to be neither advice for the purpose of purchase or sale through KSCRPL nor any solicitation or offering of any investment /trading opportunity. These information / opinions / views are not meant to serve as a professional investment guide for the readers. No action is solicited based upon the information provided herein. Recipients of this Report should rely on information/data arising out of their own investigations. Readers are advised to seek independent professional advice and arrive at an informed trading/investment decision before executing any trades or making any investments. This Report has been prepared on the basis of publicly available information, internally developed data and other sources believed by KSCRPL to be reliable. KSCRPL or its directors, employees, affiliates or representatives do not assume any responsibility for, or warrant the accuracy, completeness, adequacy and reliability of such information / opinions / views. While due care has been taken to ensure that the disclosures and opinions given are fair and reasonable, none of the directors, employees, affiliates or representatives of KSCRPL shall be liable for any direct, indirect, special, incidental, consequential, punitive or exemplary damages, including lost profits arising in any way whatsoever from the information / opinions / views contained in this Report. The possession, circulation and/or distribution of this Report may be restricted or regulated in certain jurisdictions by appropriate laws. No action has been or will be taken by KSCRPL in any jurisdiction (other than India), where any action for such purpose(s) is required. Accordingly, this Report shall not be possessed, circulated and/ or distributed in any such country or jurisdiction unless such action is in compliance with all applicable laws and regulations of such country or jurisdiction. KSCRPL requires such recipient to inform himself about and to observe any restrictions at his own expense, without any liability to KSCRPL. Any dispute arising out of this Report shall be subject to the exclusive jurisdiction of the Courts in India.

For more details, please **contact**:

 +91 9323406035 / 9619551022

 info@kediaadvisory.com

 www.kediaadvisory.com

KEDIA STOCKS & COMMODITIES RESEARCH PVT LTD.
Mumbai, IN.

SEBI REGISTRATION NUMBER - INH000006156

